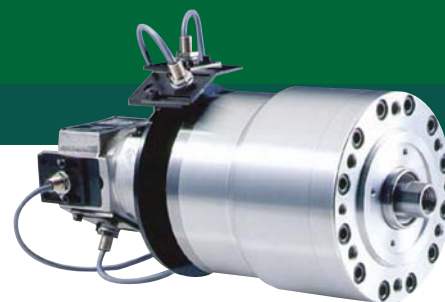


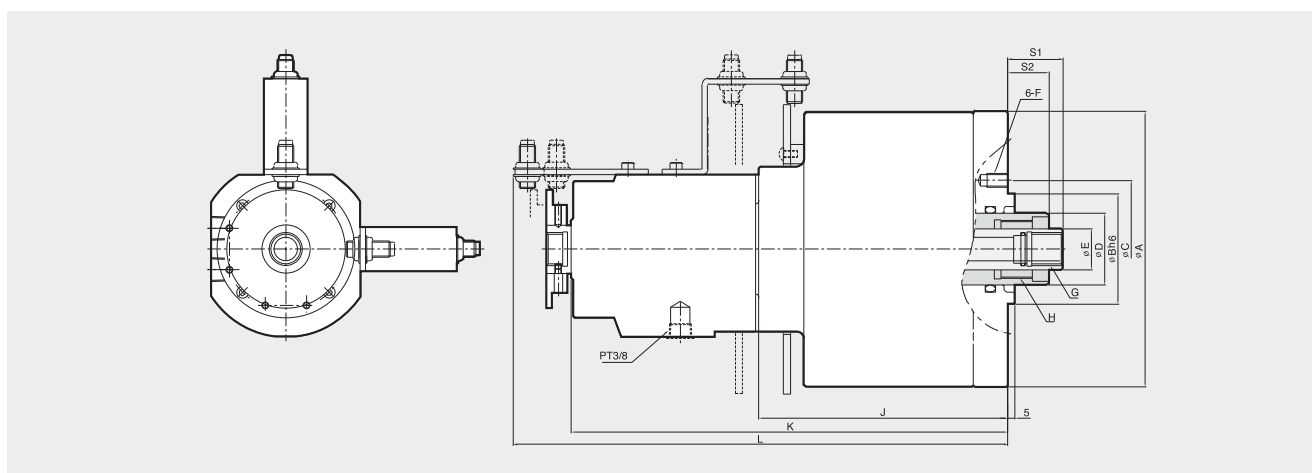
DY

Double-Piston Hydraulic Cylinder

- Double piston cylinder for retractable jaw chucks
- Actuate chucks with face drivers or parts ejectors
- Built in safety valves



HYDRAULIC CYLINDER



Dimensions

	A	B(h°)	C	D	E	F	G	H	J	K	L
DY-12520	160	110	145	50	29	6-M12	M20°Φ 1.5P	M42°Φ 1.5P	178	299	341
DY-16030	200	80/110	100	52	30	6-M10	M24°Φ 1.5P	M42°Φ 1.5P	181	371	359

Specifications

	Piston Dia. (mm)	Piston Area (cm ²)	Piston Stroke		Max. Operating Pressure (kgf/cm ²)	Max. Speed (r.p.m.)	Weight (kg)	GD ² (kgf·m ²)
			S1(Max/Min)	S2(Max/Min)				
DY-12520	125/85	102/46	56/41	36/11	40.8	5000	16.5	0.045
DY-16030	160/85	164/46	40/28	30/-5	40.8	3000	24.5	0.30