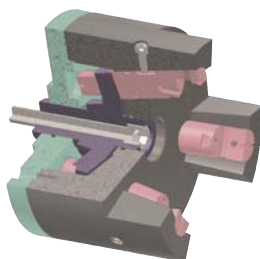


POL

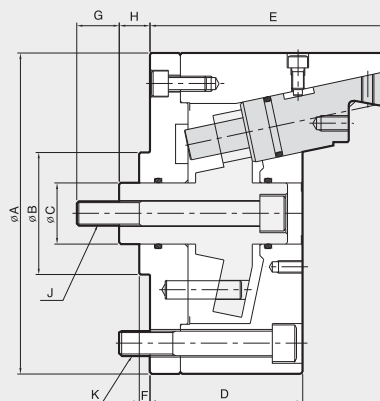
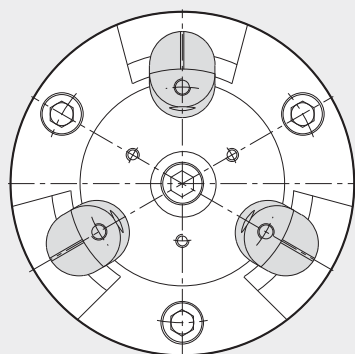
Outside Pin Arbor Chuck



- Ideal for second operation O.D. gripping
- Active pull-down for high precision
- Counter centrifugal gripping reduces distortion



APPLICATION CHUCK



Dimensions

	A	B(h ²)	C	D	E	F	G	Hmax.	Hmin.	J	K
POL-80	130	60	24	72	103	5	20	18	10	M12	3-M8 PCD100
POL-100	162	80	30	90	130	7	30	22.5	12.5	M16	3-M12 PCD130
POL-140	210	80	40	100	155	7	30	25	15	M16	3-M16 PCD170
POL-180	250	80	45	110	165	7	30	25	15	M18	3-M16 PCD210
POL-230	320	120	50	130	200	7	40	30	20	M20	6-M16 PCD270

Specifications

	Clamping Force KN(kgf)	Max. Drawbar pull (kgf)	Jaw Stroke mm(dia)	Plunger Stroke (mm)	Chucking Diameter (mm)		Max. Speed (r.p.m.)	Weight (kg)	GD ² (kgf·m ²)
					Pin Jaw (mm)	Top Jaw (mm)			
POL-80	2250	1200	3.4	8	65~80	15~60	5000	8	0.067
POL-100	3760	2000	4.2	10	86~100	20~80	4500	16	0.2
POL-140	4700	2500	4.2	10	120~140	60~110	3000	27	0.54
POL-180	5640	3000	4.2	10	150~180	100~145	2000	46	1.43
POL-230	7520	4000	4.2	10	-	120~200	2000	70	3.5