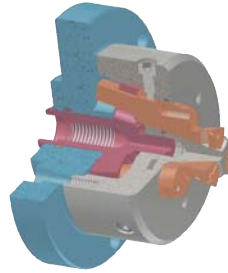


PIL

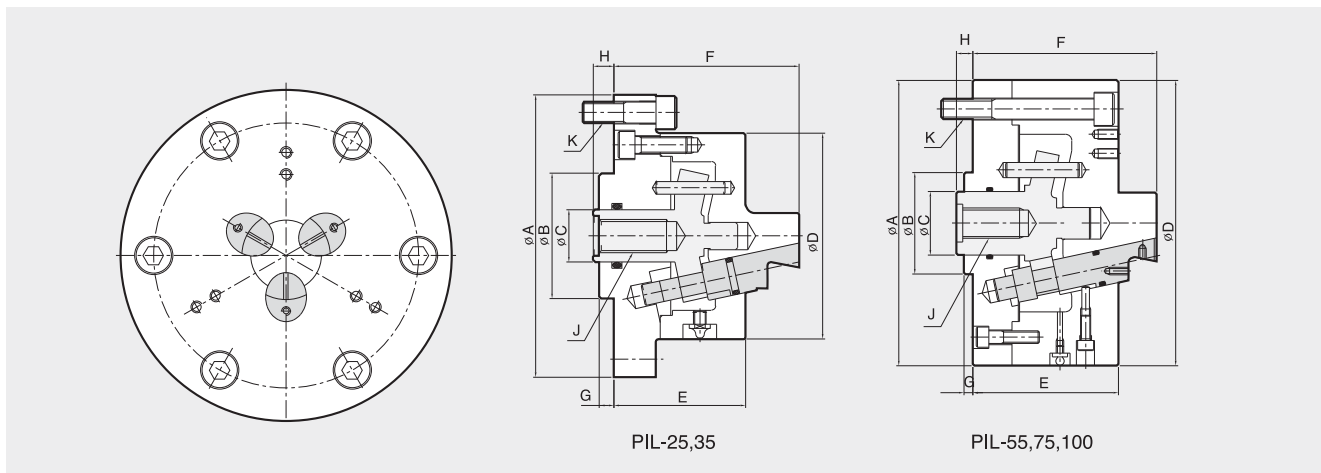
Inside Pin Arbor Chuck



- Ideal for second operation I.D. gripping
- Active pull-down for high precision
- Counter-centrifugal gripping reduces distortion



APPLICATION CHUCK



Dimensions

	A	B(h')	C	D	E	F	G	Hmax.	Hmin.	J	K
PIL-25	135	60	20	85	60	80	7	12	8	M12	3-M10 PCD118
PIL-35	135	60	25	100	63	88.5	7	12	8	M16	3-M10 PCD118
PIL-55	190	80	32	190	93	120	7	18	8	M16	3-M16 PCD150
PIL-75	225	80	50	225	115	145	7	18	8	M24	6-M16 PCD180
PIL-100	270	120	50	270	130	170	7	23	13	M24	6-M16 PCD180

Specifications

	Clamping Force KN(kgf)	Max. Drawbar Pull (kgf)	Jaw Stroke mm(dia)	Plunger Stroke (mm)	Chucking Diameter (mm)		Max. Speed (r.p.m.)	Weight (kg)	GD ² (kgf·m ²)
					Pin Jaw (mm)	Top Jaw (mm)			
PIL-25	2250	1200	1.7	4	17~25	-	5000	3.5	0.013
PIL-35	3380	1800	1.7	4	25~40	48~60	4500	4.3	0.026
PIL-55	5640	3000	4.2	10	35~55	62~90	3500	18.4	0.33
PIL-75	7150	3800	4.2	10	55~76	85~130	2500	35	0.88
PIL-100	7150	3800	4.2	10	80~110	120~180	2000	55	2.0