

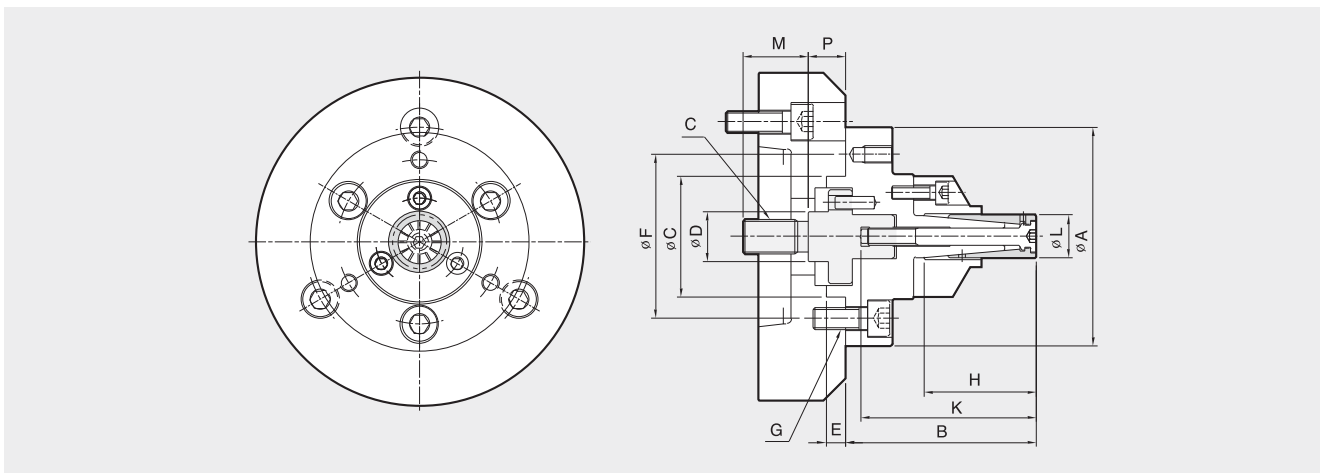
CIR

Inside-Clamping Mandrel



- Pulled down to location for accuracy
- Ideal for fragile or easily deformed workpieces
- Can be used to turn, grind and mill gears

APPLICATION CHUCK



Dimensions

	A	B	C(h ¹)	D	E	F	G	H	K	Lmax.	Lmin.	M	O	Pmax.	Pmin.
CIR-00	100	79	55	23	9	75	M10	35	75.5	19.7	14.7	30	M16	23	17
CIR-01	100	83.5	55	23	9	75	M10	40	80	24.7	19.7	30	M16	23	17
CIR-02	100	93	55	23	9	75	M10	46	86.5	29.7	24.7	30	M16	23	17
CIR-03	100	100.5	55	23	9	75	M10	50	92	34.7	29.7	30	M16	23	17
CIR-04	100	105	55	23	9	75	M10	60	102	39.7	34.7	30	M16	23	17
CIR-05	130	108.5	55	23	9	105	M10	60	102	44.7	39.7	30	M16	23	17

Specifications

	Max. Drawbar Pull (kgf)	Collet Expansion (mm)	Plunger Stroke (mm)	Chucking Diameter (mm)		Weight (kg)
				Max	Min	
CIR-00	700	1	6	20	15	1.6
CIR-01	900	1	6	25	20	1.7
CIR-02	1200	1	6	30	25	1.8
CIR-03	1200	1	6	35	30	2.0
CIR-04	1500	1	6	40	35	2.2
CIR-05	1500	1	6	45	40	2.3