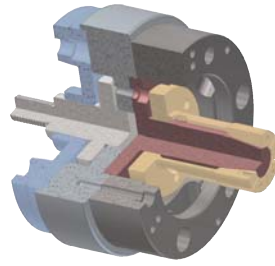


# CDI

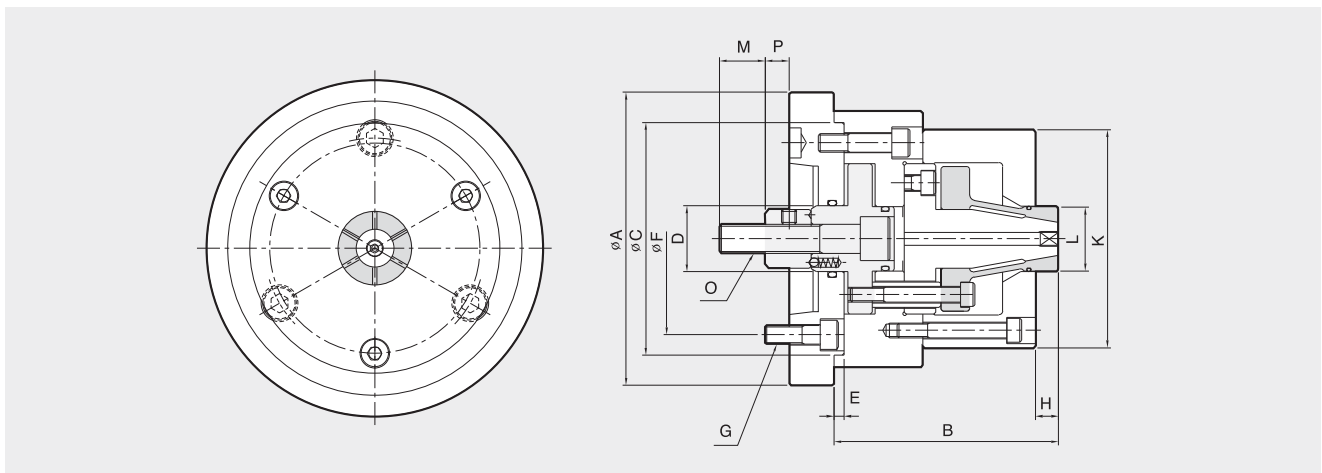
## Inside-Clamping Mandrel



- Pulled down to location for accuracy
- Collet changes quickly for machining a variety of work pieces
- Air sensing can be added for automatic loading



**APPLICATION CHUCK**



### Dimensions

	A	B	C(h')	D	E	F	G	H	K	Lmax.	Lmin.	M	O	Pmax.	Pmin.
CDI-06	165	115	150	35	6	104.8	M10	15	L+25	15	40	40	M16	26	23
CDI-08	200	135	170	42	6	133.4	M12	20	L+35	90	40	45	M20	33	29
CDI-10	250	180	230	52	6	171.4	M16	35	L+40	130	90	55	M24	36	32
CDI-12	300	220	230	52	6	171.4	M16	40	L+50	180	130	55	M24	37	32

### Specifications

	Clamping Force (kgf)	Max. Drawbar Pull (kgf)	Collet Expansion (mm)	Plunger Stroke (mm)	Chucking Diameter (mm)		Max. Speed (r.p.m.)	Weight (kg)	GD <sup>2</sup> (kgf·m <sup>2</sup> )
					Max	Min			
CDI-06	4000	1500	0.8	3	40	15	4500	7	0.06
CDI-08	7000	2500	1.0	4	90	40	4000	14	0.19
CDI-10	12000	4000	1.0	4	130	90	3300	34	0.71
CDI-12	15000	4800	1.4	5	180	130	2500	55	2.0